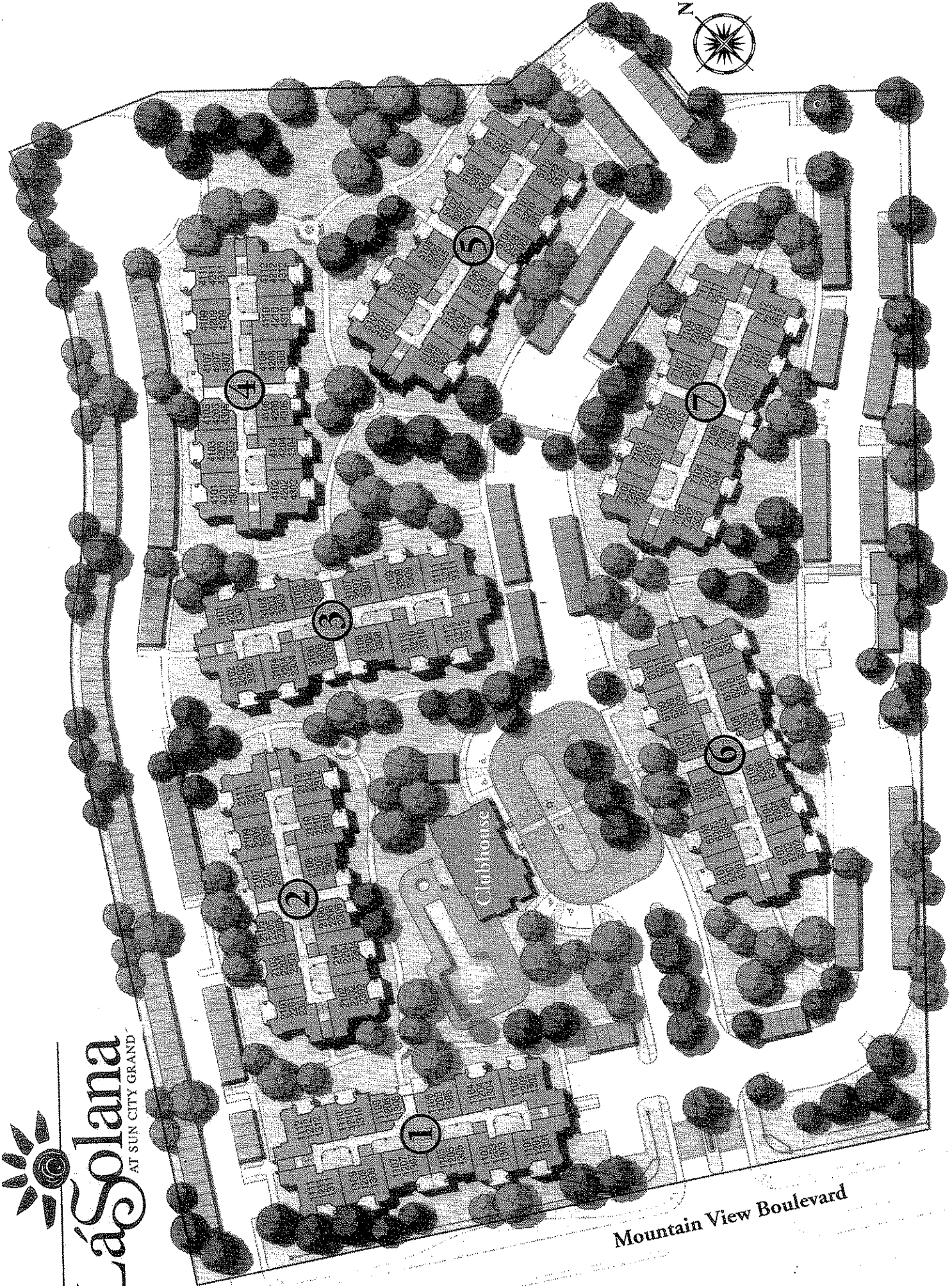


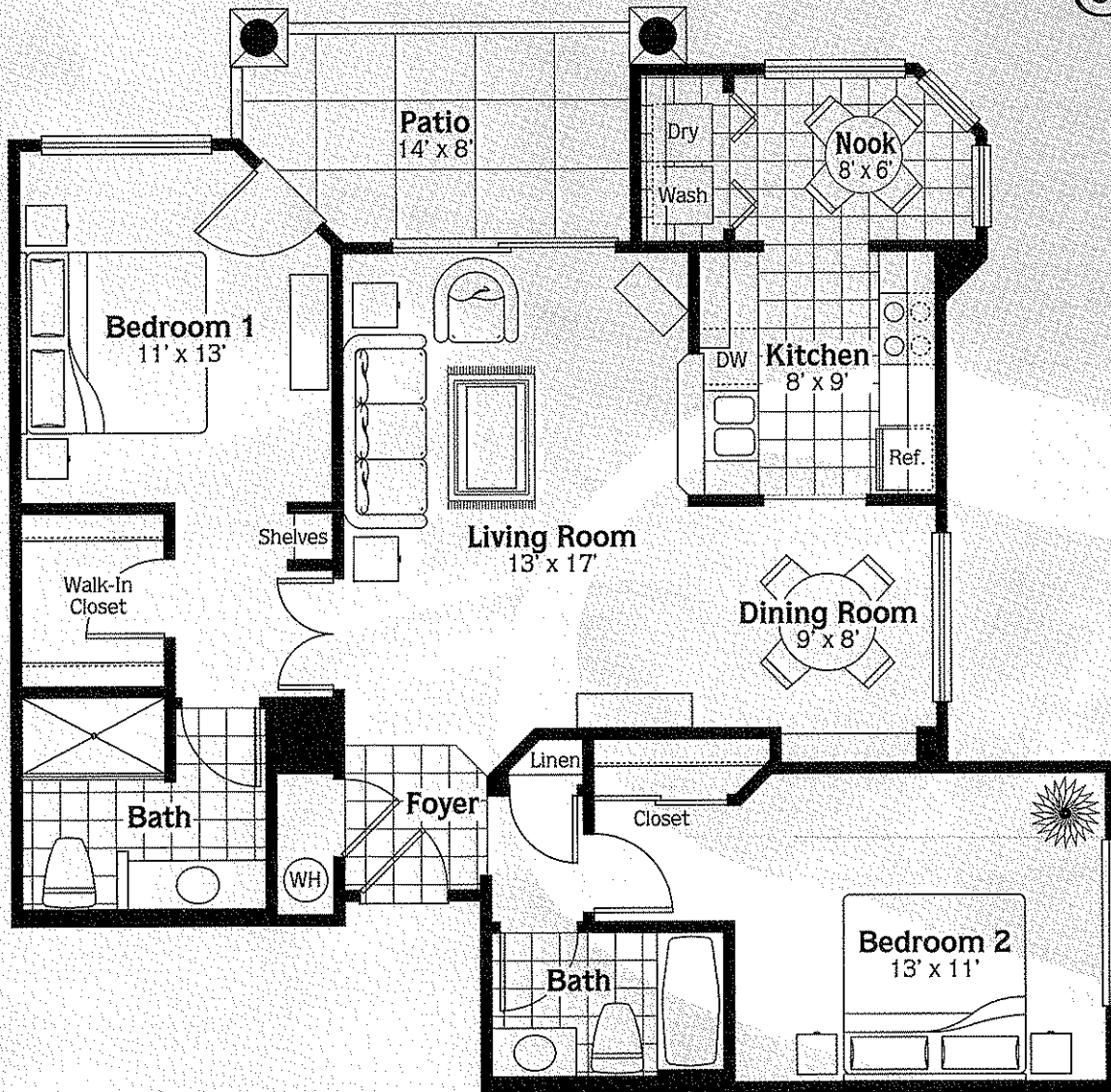


# LaSolana

AT SUN CITY GRAND

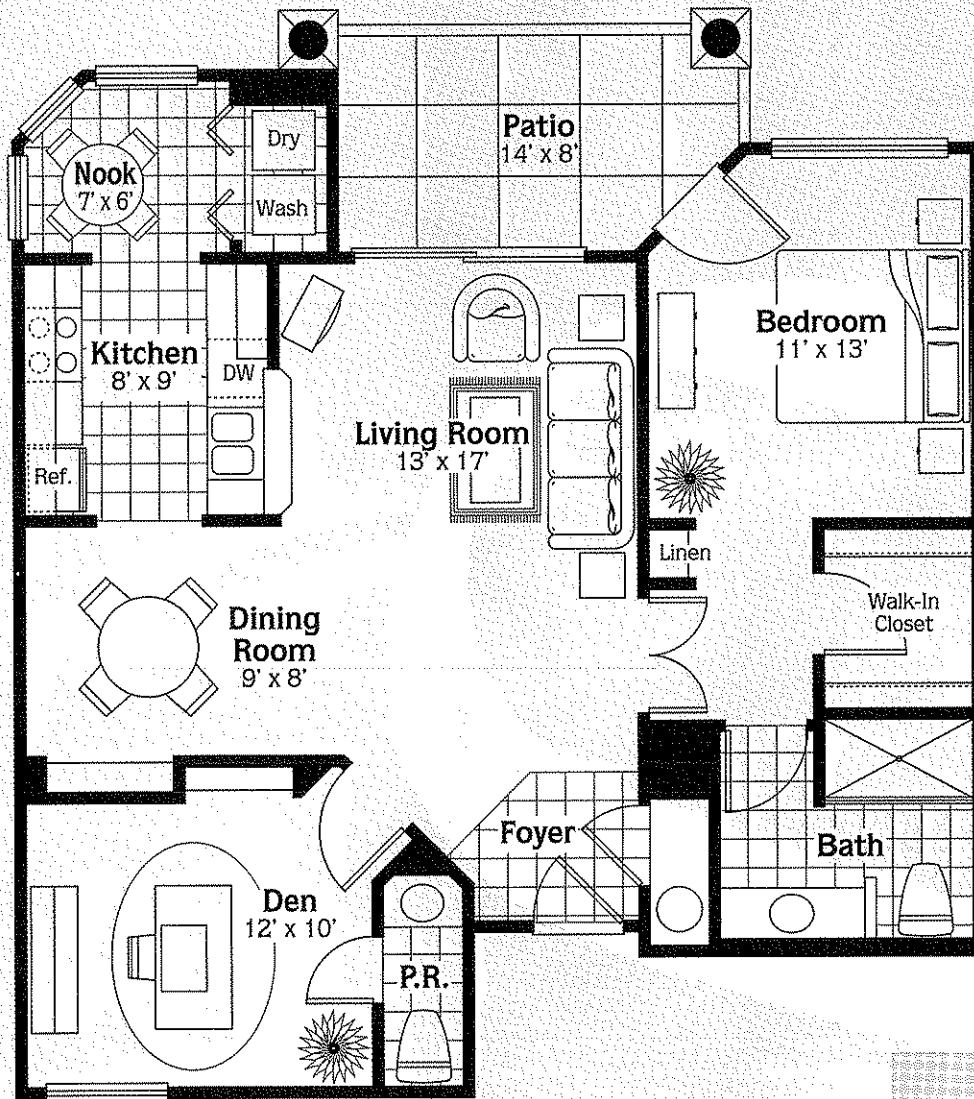


Mountain View Boulevard



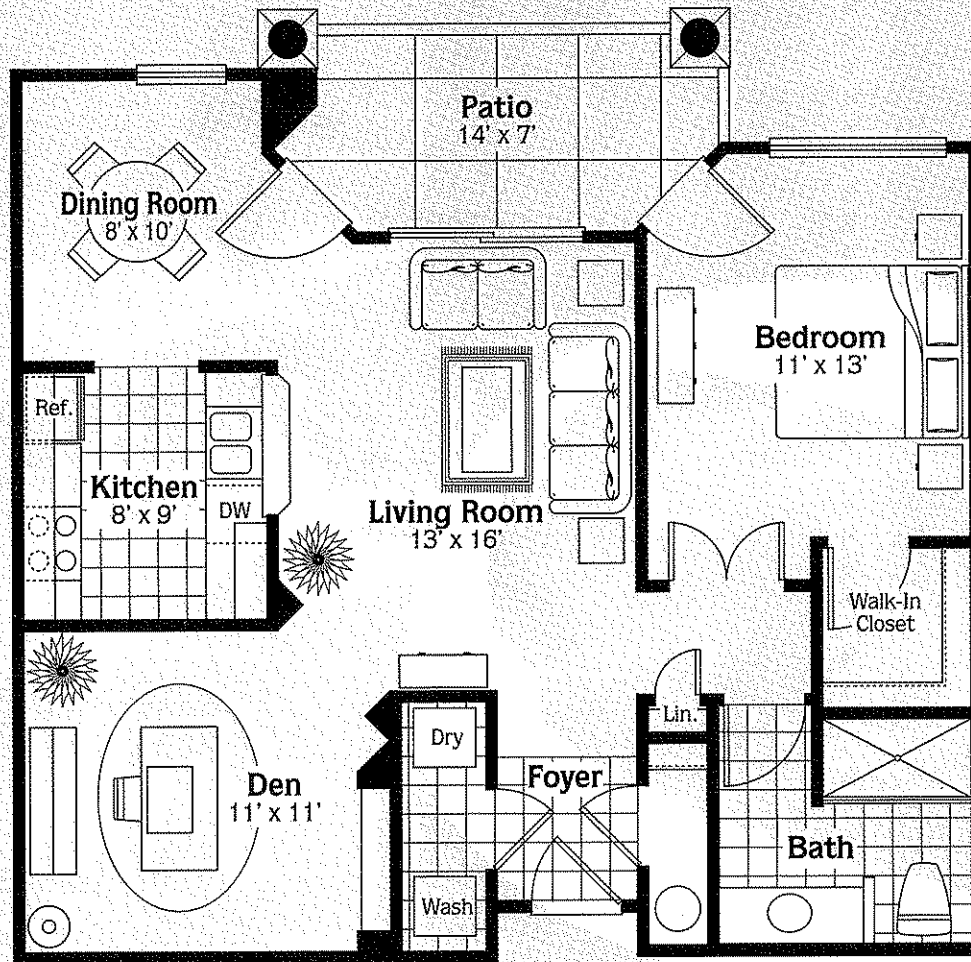
**GRANDE**  
1021 SQ. FT.

The Grande keeps an artful eye on the big picture, with a 9-foot ceiling highlighting each room. The open living room, with a sliding glass doorwall to the terrace, adjoins a sunny dining room with built-in display shelves. In the spacious kitchen, featuring a convenient laundry area, you can dine casually in the nook set in an angled bay. Guest-friendly, the Grande's twin bedrooms ensure that you are always prepared for overnight stays. Access the owner's suite through double French doors, beyond which the bedroom features a walk-in closet, display shelves and access to the outdoor terrace.



**MIRADA**  
923 SQ. FT.

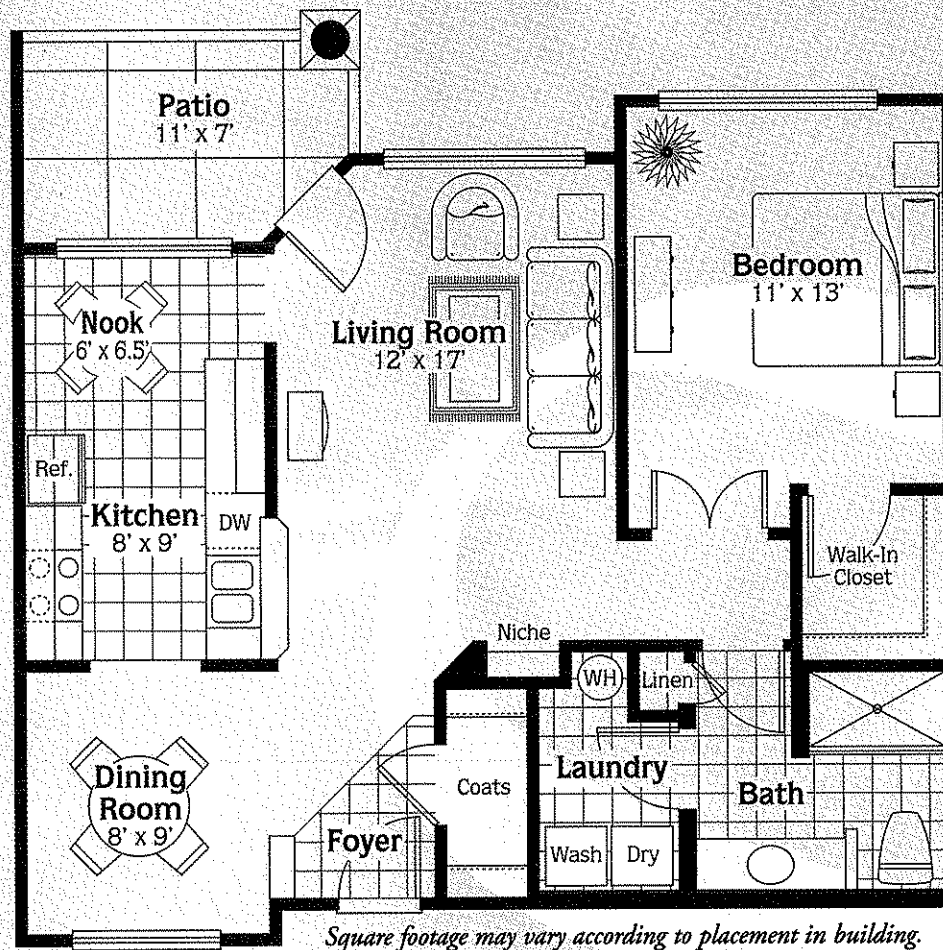
Form and function lend logic to the layout of The Mirada, which features 9-foot ceilings throughout. The dining room with built-in display shelves flows into the spacious living room. The step-saving kitchen, with its built-in serving bar, opens to the living area and contains its own dining nook and laundry area, which are set in a windowed bay. The flexible den, with its own private half bath, is ideal for use as a study or guest bedroom. The master suite features a large walk-in closet as well as access to the outdoor terrace.



**AVISTAR**  
854 SQ. FT.

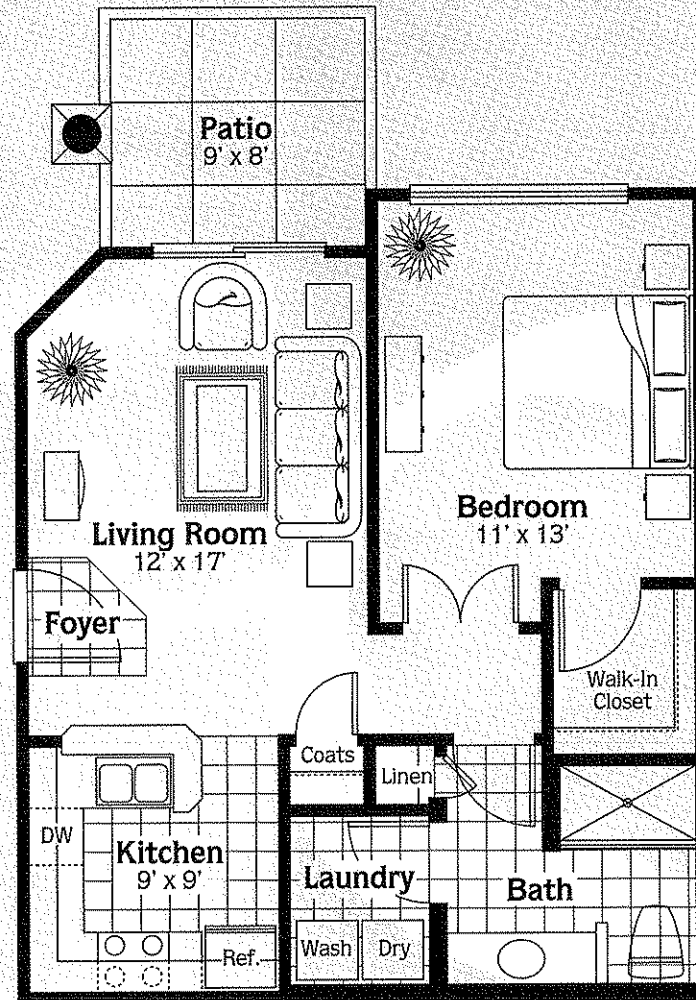
The Avistar's spacious rooms and 9-foot ceilings give off a lofty feeling. Illuminated by sunlight from the outdoor terrace, the living room flows into the dining room and a cozy den large enough to double as a guest bedroom. An ideal respite, the master suite features double doors, a walk-in closet, and plenty of wall space. French doors open from the bedroom and dining room to an outdoor terrace.

An in-residence laundry area ensures optimal convenience.



**VENTANA**  
805 SQ. FT.

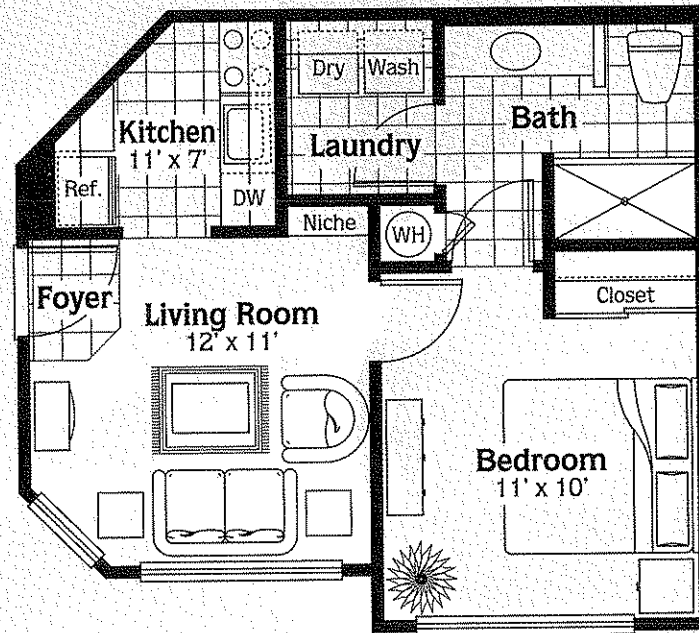
The Ventana clearly defines easy living. With 9-foot ceilings throughout, the intimate dining room flows into a spacious living room that features an art niche. The step-saving kitchen, with its self-cleaning oven and built-in microwave, includes its own charming nook, which overlooks the outdoor terrace. The spacious bedroom, adjacent to a full bath, provides a walk-in closet and ample wall space. An in-residence laundry area is a convenient highlight.



**VISTA**  
601 SQ. FT.

Stylized efficiency is key in the Vista, where 9-foot ceilings elevate the feeling. Illuminated by sunlight through a sliding glass door to the balcony or patio, the spacious formal living room adjoins a cozy kitchen.

A relaxing hideaway, the master suite boasts double doors, a walk-in closet, and plenty of wall space. An in-residence laundry area adds a convenient touch.



**LIBRA**  
427 SQ. FT.

The Libra was designed for ease and comfort, with 9-foot ceilings throughout and an angled living room that showcases double windows and an art niche. The adjoining kitchen features a complete appliance package including a built-in microwave and dishwasher. A separate in-residence laundry area lends additional convenience.